

## Turntable Pallet Wrapper



- **Compact, Semi-Automatic Turntable Stretch Wrapper**  
*Wraps palletized loads of any shape and weight  
Forklift slots for easy transport*
- **Twin motor/twin roller pre-stretch system**  
*Adjustable from 0 to 400%*
- **Customizable wrapping programs**  
*5 Pre-set wrapping programs  
Create and store up to 99 custom wrap programs*
- **Adjustable pre-stretch, film tension and rotation speed**  
*Can be adjusted for upward and downward travel of  
the wrapping arm to wrap A, B and C pallet loads*
- **Film consumption monitoring**  
*Provides a digital display of the film used after every wrap*
- **Maintenance free motorized screw and hinged wrapping arm**  
*Simplified, enclosed system for sustained service life*



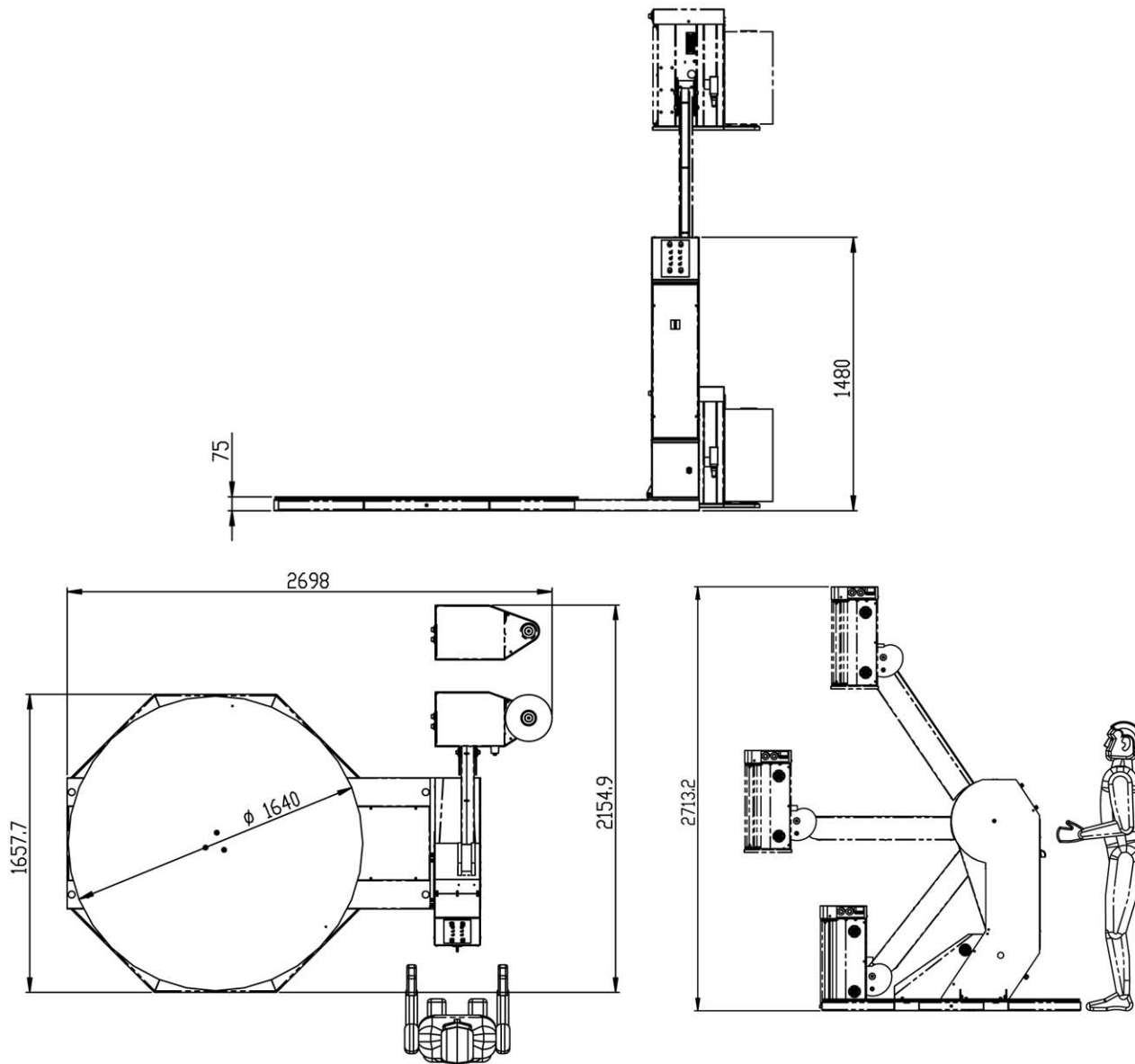
Digital Control Panel



Quick & Easy Film Loading



# MYTHO



- *Standard 110v, 60HZ wall charge*
- *Maximum pallet size 3.2' x 3.9' (1000mm x 1200mm)*
- *Maximum load capacity 4,409 lbs. (2000Kg)*

### **Corporate Headquarters**

3301 Gateway Centre Blvd. | Pinellas Park, FL 33782  
Tel: 727.578.3003 | Fax: 727.578.3007  
[www.filmsourceinternational.com](http://www.filmsourceinternational.com)  
[info@filmsourceinternational.com](mailto:info@filmsourceinternational.com)

